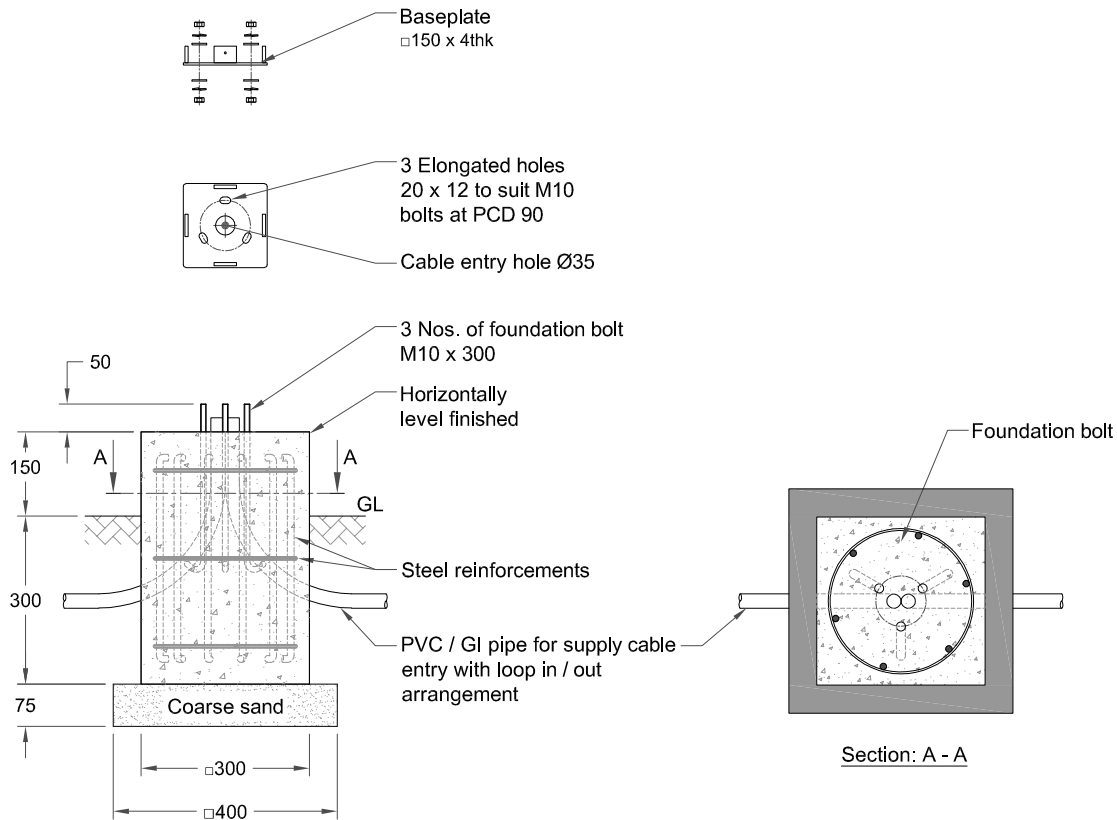


DWG. CODE : KL-DFD-089
SHEET No. : 1 of 1

ALL DIMENSIONS ARE IN mm



Note :

1. Typical foundation drawing. Contact local site engineer for detailed drawing.
2. Parameters considered in RCC foundation design :
 Load bearing capacity of soil (LBC) : 10 Mt/m² (Minimum)
 Grade of steel reinforcement : Fe 415
 Grade of foundation bolt : 4.6
3. Height of foundation above ground level (150mm) may be revised to suit the site conditions especially considering the expected water level stagnation.
4. Template supplied is suggested to be used for locating the PCD of foundation bolts.
5. 4 Nos. of foundation bolt have to be oriented (located), while casting the foundation such that the door of the electrical junction box faces the required direction.
6. PVC / GI pipe for entry of supply cable and the materials required for foundation are not scope of our supply.

01	DESIGN REVISED	26-12-25	Poovarasam		
REV. No.	REVISION DETAILS	DATE	REVISED	CHD	APPD

DRAWN R.SATHISH	CHECKED	APPROVED	DATE 15-02-19	SCALE 1:14	MATERIAL -	Z:\K - LITE\006.FOUNDATION DETAILS\KL-DFD-089 (M36)\KL-DFD-089 (M36).REV 01.dwg				
		K-LITE INDUSTRIES PRIVATE LIMITED CHENNAI-600 058			DETAILED FOUNDATION DRAWING FOR KL - M36 □150 x 4 (FOUNDATION BOLT M10 x 300)					
						DRG. CODE. KL-DFD-089	REV 01	SHEET 1 of 1		