



vimana

Designed to transform urban environments, the Area Lighting Luminaire combines advanced technology with innovative design to create a distinctive atmosphere in towns and cities. This state-of-the-art luminaire enhances public spaces while seamlessly integrating with the landscape. Its stylish form not only provides optimal illumination but also helps convey the unique identity and character of any urban setting.

MATERIAL

Body : Spun aluminium & Extruded aluminium alloy (grade 6063)
Ingress Protection : IP65
Diffuser : Polycarbonate
Mounting : Suitable for mounting on 76mm OD pipe

ELECTRICAL

Driver : Standard
Power Supply : Integral
Input Voltage : 230-240Vac / 50-60 Hz
Surge : 6KV

PRODUCT CONFIGURATIONS

Wattage : 50W
Light Distribution : Symmetrical
CCT : 2700K / 3000K / 4000K / 5700K
LED Life Time : L70 B10 1,00,000 H

AREA OF APPLICATION

Area lighting, Traffic junction, Campus Lighting, Resorts, Shopping centres, Medium size bridge cross ways, Sports Lightings etc.,

AVAILABLE FINISH

Pure polyester powder coated
RAL 9004 Black
RAL 9007 Grey aluminium
RAL 7016 Anthracite grey
Graphite grey





Technical Specifications

General

ID	: 24399
System Wattage	: 50W LED
Driver Integral	: Constant Current
Operating Voltage	: 100-265Vac
Operating Temperature	: -15°C~+50°C

Physical

Body	: Spun aluminium & Extruded Aluminium
Diffuser	: Polycarbonate
Mounting	: Suitable for 76mm OD pipe
Finish	: Powder coated RAL 9004 Black RAL 9007 Grey aluminium RAL 7016 Anthracite grey Graphite grey

Light Source

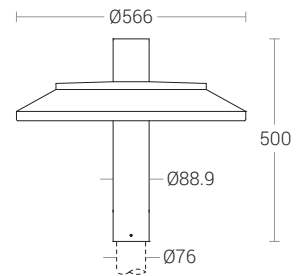
Light Source	: LUMILEDS
CRI (Ra)	: ≥70
LED Colour Temperature	: 2700K / 3000K / 4000K / 5700K

Driver

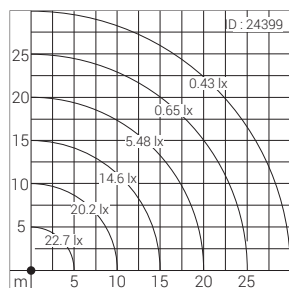
Power Supply	: Integral
Input Voltage	: 230-240Vac
Frequency	: 50-60 Hz
Power Factor	: >0.9
THD	: <10%
Surge Protection	: 6KV
Efficiency	: >85%

Optical Performance

Light Distribution	: Symmetrical
--------------------	---------------



Light Distribution



Applied Photometry : H=5m